



## Silent Partner Max

RMS CURRENT • VOLTAGE • POWER FACTOR • PULSE DATALOGGER

### Application

- ✓ Energy Studies – Also does costing !
- ✓ Industrial Monitoring
- ✓ Machinery and motor analysis
- ✓ HVAC studies
- ✓ Electrical Utilities
- ✓ Peak shaving and Load Management

### Features

- ✓ **No Live Connections !**
- ✓ 12 - Bit True RMS Measurements
- ✓  $\pm 0.25\%$  Accuracy
- ✓ Measure 3 currents, 1 voltage, 1 power factor, 1 dry contact pulse input
- ✓ Downloads with Silent Partner Windows® software



The Silent Partner Max is ideal for countries that do not allow connection to live voltage, such as the United Kingdom. The SPMAX uses clamp-on CT's to monitor current, and plugs into a standard wall socket for voltage. It also has a pulse input channel, allowing you to log any meter or sensor that has a pulse type output. The pulse channel and the serial port are both optically isolated, ensuring continued safety for the user. LED Indication of line power, battery charge, under/overvoltage, CT phase error, overcurrent/no current, recording

	Specification		Notes
Maximum Channels	6		Selectable storage for each channel.
Range	Channel 1 Channel 2 Channel 3 Channel 4 Channel 5 Channel 6	0 - 275 VAC – Via IEC-320 type connector 0 - 1 VAC - Current CT Input 0 - 1 VAC - Current CT Input 0 - 1 VAC - Current CT Input 0 - 180° Channel 1 to Channel 2 Pulse input from dry contacts	True RMS for 50/60 Hz. operation. Pulse input is used for dry or voltage free contacts only. Other voltage ranges available - contact Northwood for details. Power factor calculated via software (cos $\theta$ ).
External Connections	DB9 serial download, 3 current, 1 voltage, 1 pulse		
Sensor Type	External CT's, internal impedance network for voltage.		
Sampling Rate	¼ second.		Set via Silent Partner software.
Storage Interval	1 second to 15 minutes.		Set via Silent Partner software.
Parameters Stored	Avg, Min/Max, or Min/Max/Avg.		Set via Silent Partner software.
Samples per Average	4 to 3600, depending on storage rate.		Set automatically, depending on storage rate.
Memory	512K, non-volatile RAM.		
Memory Treatment	Stop when full, or wrap.		Set via Silent Partner software.
Storage Capacity	15 days for 5 channels, min/max/avg, 1 minute storage.		Storage available depends on number of channels and storage mode.
Indicators	LED's for: Line Power, Over/Under/Phase, Over current		
Power	Line Power, Internal battery.		Internal battery recharged via voltage input.
Battery Life	14 Days.		
Communications	Opto-isolated RS232, support for remote setup.		
Software	Silent Partner for Windows.		Requires PC running Windows 3.1 or greater and 1 free serial port.
Packaging	Rugged, durable ABS.		
Accuracy	$\pm 0.25\%$ Range + CT error		
Safety	Optically isolated download		
Operating Temperature	- 20°C to 50°C		

Specifications Subject to Change Without Notice

# Silent Partner Pro Software - Simple, Easy, Powerful

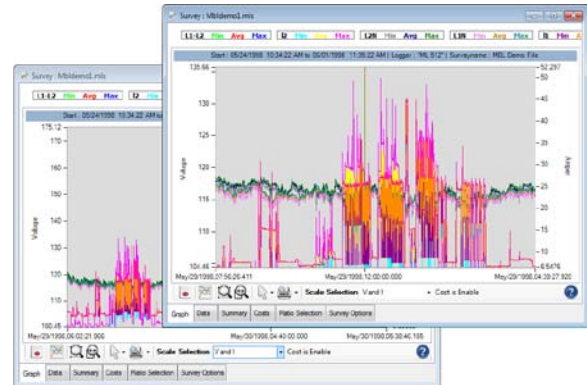
Silent Partner Pro software allows you to download, save, retrieve and analyze data collected by the Silent Partner series products. The software will run on any PC running Windows XP, Windows 7, and Windows 8.

## Software Features

- Runs under Microsoft Windows® XP, 7 and 8
- Full colour print support
- Built-in export to CSV, MS Excel, MS Word and HTML
- Allows you to import a bitmap file so you can include your company logo on printed reports

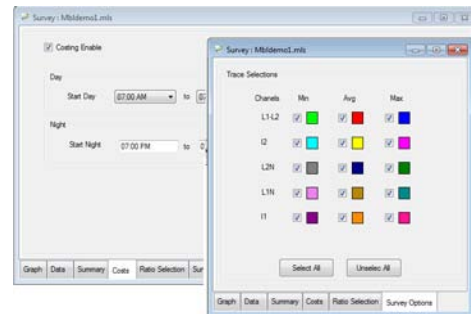
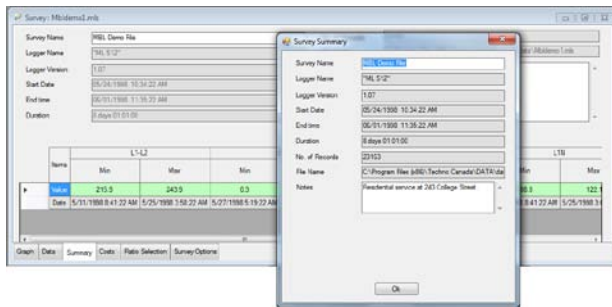


- Flexible View graphs from 1 second and up
- View current and voltage traces on a single graph
- Enable and disable individual traces to remove on-screen clutter
- Graphs can be configured to display a single or dual Y-axis
- Zoom feature allows you to view graphs in maximum detail



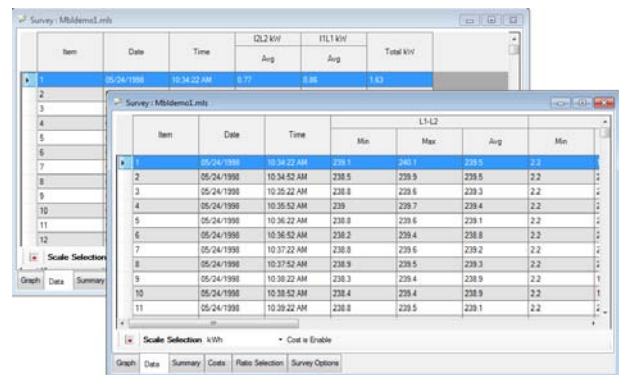
- The Notes box allows you to enter information about the test site, particulars of the hookup, contact names, etc.
- View your data in graphical form or view the actual numerical data in tabular form

- All setup of sampling rate/storage interval, time and channel configuration is done via software
- Calculate Power values such as kW, kVAR, kVA, kWh and kWh cost!



- The Data Box allows you to view details information on the Graph.
- Real Time Monitoring all Voltages and Currents Ch.

- The Survey Summary gives you concise statistics about your data in one compact report, with min/max reports for each data type



## Ordering Information

### Description

Silent Partner Max 512K memory  
Silent Partner Software (c/w download cable)

### Order Code

SPMax220  
SPSOFT

### Description

5A to 1VAC CT (RED, YELLOW, BLUE)  
1000A to 1VAC CT (RED, BLUE, YELLOW)  
3000A to 1VAC CT (RED, YELLOW, BLUE)

### Order Code

M357, 8, 9  
M319, 20, 21  
M349, 50, 51

Northwood Power Instruments Inc.  
1235 Journey's End Circle, Unit #1  
Newmark, Ontario L3Y 8T7 CANADA  
Tel.: 905-770-3797 Fax: 905-770-4167 www.northwoodpower.ca

Distributed by: