

Silent Partner Heavy Duty SPHD RMS CURRENT / VOLTAGE DATALOGGER

Application

- ✓ Energy Studies
- ✓ Machinery and motor analysis
- ✓ HVAC studies
- ✓ Electrical Utilities
- ✓ Peak shaving and Load Management

Features

- ✓ True RMS Measurements
- ✓ 12 Bit Resolution
- ✓ $\pm 0.25\%$ Accuracy
- ✓ Measure voltage or current on any channel.
- ✓ Downloads with Silent Partner Windows[®] software



The Silent Partner Plus is an inexpensive current and/or voltage logger that is especially useful where harmonics are suspected. RMS values can be stored at different rates by the user. Inputs accept any 1 VAC full scale CT or PT.

	Specification	Notes
Maximum Channels	Three	Selectable storage for 1, 2, or 3 channel operation.
Range	0 - 1 VAC input. Actual current range depends on CT used.	True RMS for 50/60 Hz. operation.
External Connections	Aux. power, download. and three 1 VAC inputs.	
Sensor Type	External CT's or external voltage module.	
Sampling Rate	2 to 4 seconds.	Set via Silent Partner software.
Storage Rate	32 seconds to 15 minutes.	Set via Silent Partner software.
Parameters Stored	Avg, Min/Max, or Min/Max/Avg.	Set via Silent Partner software.
Samples per Average	16 at 32 second storage. 256 at 15 minute storage.	Set automatically, depending on storage rate.
Memory	64K non-volatile RAM.	
Memory Treatment	Stop when full, or wrap.	Set via Silent Partner software.
Storage Capacity	87,264 readings for 1 channel, avg. only. 14,544 readings for 1 channel, min/max/avg.	Storage available depends on number of channels and storage mode.
Indicators	Flashing LED when logging.	
Power	Internal battery and/or adapter.	Uses standard 9V alkaline.
Battery Life	At least 7 days (can also operate from external adapter).	
Communications	RS232, support for remote setup.	
Software	Silent Partner for Windows.	Requires PC running Windows's XP & 7
Packaging	Rugged, durable ABS.	
Accuracy	$\pm 0.25\%$ Range + CT or PT error	
Safety	Isolation of measurement circuit via CT's and PT's	
Operating Temperature	- 40°C to 60°C	

Silent Partner Pro Software - Simple, Easy, Powerful

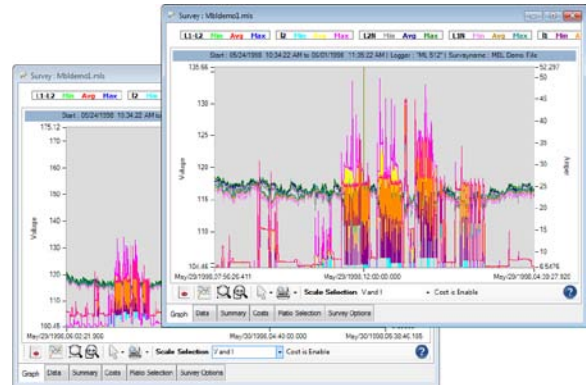
Silent Partner Pro software allows you to download, save, retrieve and analyze data collected by the Silent Partner series products. The software will run on any PC running Windows XP, Windows 7, and Windows 8.

Software Features

- Runs under Microsoft Windows® XP, 7 and 8
- Full colour print support
- Built-in export to CSV, MS Excel, MS Word and HTML
- Allows you to import a bitmap file so you can include your company logo on printed reports

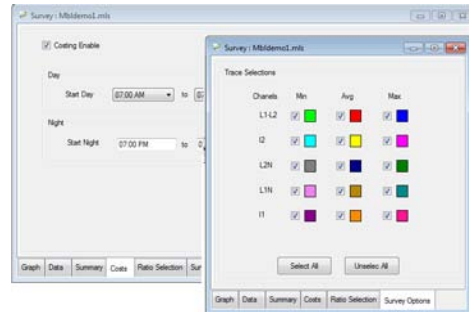
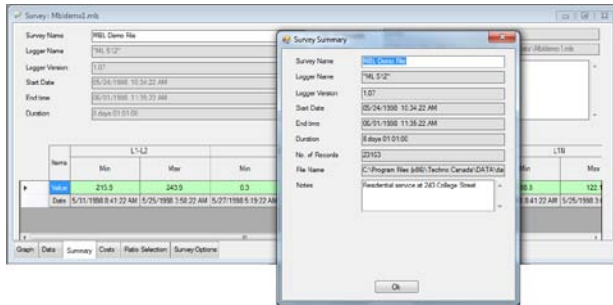


- Flexible View graphs from 1 second and up
- View current and voltage traces on a single graph
- Enable and disable individual traces to remove on-screen clutter
- Graphs can be configured to display a single or dual Y-axis
- Zoom feature allows you to view graphs in maximum detail



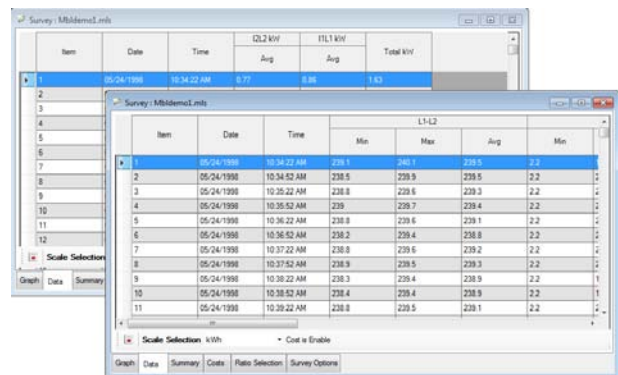
- The Notes box allows you to enter information about the test site, particulars of the hookup, contact names, etc.
- View your data in graphical form or view the actual numerical data in tabular form

- All setup of sampling rate/storage interval, time and channel configuration is done via software
- Calculate Power values such as kW, kVAR, kVA, kWh and kWh cost!



- The Data Box allows you to view details information on the Graph.
- Real Time Monitoring all Voltages and Currents Ch.

- The Survey Summary gives you concise statistics about your data in one compact report, with min/max reports for each data type



Ordering Information

Description

Silent Partner Heavy Duty (SPHD)
20 VAC Tingle-Voltage Input Module
750 VAC Voltage Input Module

Order Code

SPHD64
ACMOD1-20
ACMOD1-600

Description

5A to 1VAC CT (RED, YELLOW, BLUE)
1000A to 1VAC CT (RED, BLUE, YELLOW)
3000A to 1VAC CT (RED, YELLOW, BLUE)

Order Code

M357, 8, 9
M319, 20, 21
M349, 50, 51

Northwood Power Instruments Inc.
1235 Journey's End Circle, Unit #1
Newmark, Ontario L3Y 8T7 CANADA
Tel.: 905-770-3797 Fax: 905-770-4167 www.northwoodpower.ca

Distributed by: