



Silent Partner SPCV200/1000 CLAMP-ON CURRENT DATALOGGER

Features

- ✓ Two channel Data Logger & Multi-Meter
- ✓ Measure and Loges up to 200 Amps / 600VAC on SPCV-200 and 1000A / 600VAC on SPCV-1000
- ✓ Power calculation software
- ✓ Selectable storage rate from 1 second to 4 hours
- ✓ Downloads with Silent Partner Pro Windows® software
- ✓ CATIII – 600V / CATIII – 1000V

Applications

- ✓ Energy Studies
- ✓ Industrial Monitoring
- ✓ Machinery and motor analysis
- ✓ HVAC studies
- ✓ Electrical Utilities
- ✓ Peak shaving and Load Management



The Silent Partner Current (SPCV) Logger is an inexpensive Current and Voltage logger that is ideal for quickly gathering current and voltage profiles. The SPCV-200 measures and logs up to 200A and SPCV-1000 measures and logs up to 1000A. The integrated split-core Current Transformer allows for simple, non-intrusive hookups and internal impedance network for voltage.

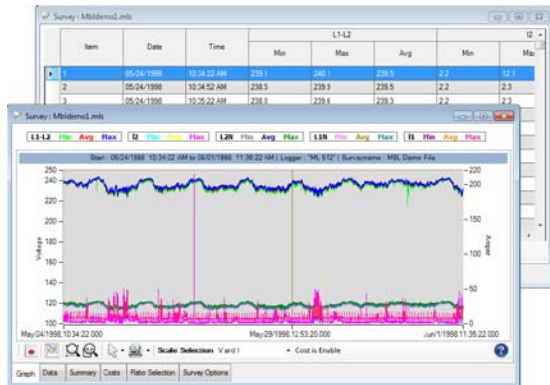
	Specification	Notes
Maximum Channels	Two	Voltage & Current
Range	2-200 Amps AC , 600VAC (SPCV-200) 2-1000Amps AC, 600VAC (SPCV-1000)	
External Connections	USB COM port, Voltage terminal and CT	
Sensor Type	External CT's for current, internal impedance network for voltage.	Hall effect sensor for current.
Sample/Storage Rate	1 second to 4 hours.	Set via Silent Partner Pro software Windows®.
Parameters Stored	Single point store.	Set via Silent Partner Pro software Windows®.
Memory	32K non-volatile	
Memory Treatment	Stop when full, or wrap.	Set via Silent Partner Pro software Windows®.
Storage Capacity	4000 readings per channel	
Indicators	Flashing LED when logging.	
Power	Internal battery.	Uses standard 9V alkaline.
Battery Life	Approximately 1 years.	
Communications	USB COM Port, support for remote setup.	
Software	Silent Partner Pro software Windows®.	Requires PC running Windows 32Bits and 64Bits.
Packaging	Rugged, durable ABS.	
Accuracy	1% Full Scale ± 1LSD	
Resolution	1 Amp	
Safety	CATIII – 600V for SPCV-200* CATIII – 1000V for SPCV-1000	* Jaw Section: CATIII – 600V, 600A Terminal: CATII – 600V , Double insulator
Max. Jaw Open Size	30mm (1.18") diameter for SPCV-200 60mm (2.36") diameter for SPCV-1000	
Weight	280 grams (4 ounces) for SPCV-200 430 grams (4 ounces) for SPCV-1000	
Dimensions	180 x 47 x 35 mm (7.1" x 1.9" x 1.4")	
Environmental	0°C to 50°C (32°F to 122°F), Relative humidity - up to 90% non-condensing.	

Silent Partner Pro Software - Simple, Easy, Powerful

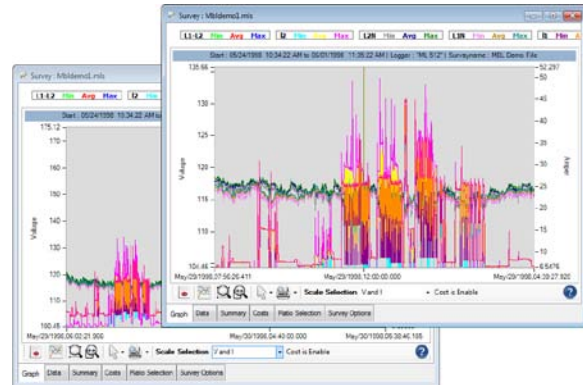
Silent Partner Pro software allows you to download, save, retrieve and analyze data collected by the Silent Partner series products. The software will run on any PC running Windows XP, Windows 7, and Windows 8.

Software Features

- Runs under Microsoft Windows® XP, 7 and 8
- Full colour print support
- Built-in export to CSV, MS Excel, MS Word and HTML
- Allows you to import a bitmap file so you can include your company logo on printed reports

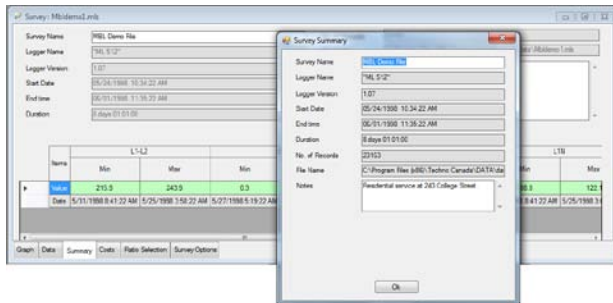


- Flexible View graphs from 1 second and up
- View current and voltage traces on a single graph
- Enable and disable individual traces to remove on-screen clutter
- Graphs can be configured to display a single or dual Y-axis
- Zoom feature allows you to view graphs in maximum detail

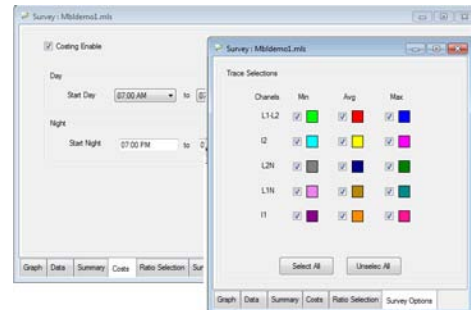


- The Notes box allows you to enter information about the test site, particulars of the hookup, contact names, etc.
- View your data in graphical form or view the actual numerical data in tabular form

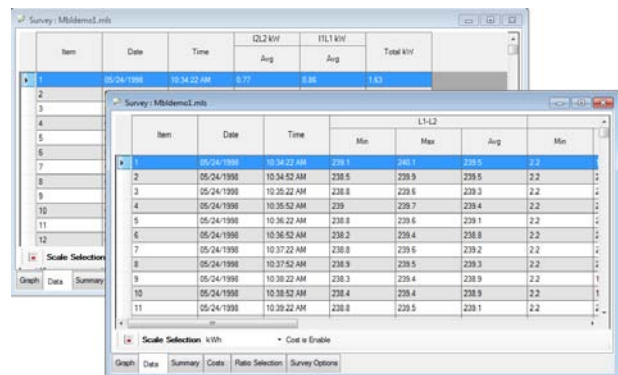
- All setup of sampling rate/storage interval, time and channel configuration is done via software
- Calculate Power values such as kW, kVAR, kVA, kWh and kWh cost!



- The Data Box allows you to view details information on the Graph.
- Real Time Monitoring all Volts and Currents Ch.



- The Survey Summary gives you concise statistics about your data in one compact report, with min/max reports for each data type



Ordering Information

Description	Order Code	Description	Order Code
Silent Partner Current/Voltage Logger 200A/600V	SPCV200	Extra Instruction Manual	MA55
Silent Partner Current/Voltage Logger 1000A/600V	SPCV1000	Extra Download Cable	DC55

Northwood Power Instruments Inc.
1235 Journey's End Circle, Unit #1
Newmark, Ontario L3Y 8T7 CANADA
Tel.: 905-770-3797 Fax: 905-770-4167 www.northwoodpower.ca

Distributed by: