



Silent Partner MBL

METER BASE VOLTAGE & CURRENT LOGGER



Features

- ✓ Record RMS voltage for L1-N, L2-N, L1-L2, and RMS current for L1-N, L2-N (12-bit resolution).
- ✓ Installs behind regular revenue meter – no need to enter the customer's house.
- ✓ – 40°C temperature range for extreme weather conditions.
- ✓ Versatile neutral connection works with all sockets.

Applications

- ✓ Investigate over charging, under charging, or inaccurate revenue billing meters.
- ✓ Monitor voltage sags, swells, and current profiles for L1 and L2.
- ✓ Customer complaint diagnosis.
- ✓ Monitoring vacant buildings.
- ✓ Peak Shaving and Load Management.
- ✓ Find loose neutrals.

The Silent Partner Meter Logger is a safe, easy to operate logging solution for residential use. Completely housed in a meter base adapter, the logger is easily installed between the existing revenue meter and the meter base. Rugged, watertight construction means that the logger is resistant to harsh environments and vandalism. Unlike other loggers, the MBL actually measures line to line voltage in addition to line to neutral. This is important, because phase shifts can cause the sum of the two lines to neutral voltages to be greater than the actual measured line-to-line voltage. Internal rechargeable batteries continue logging in the event of a power failure.

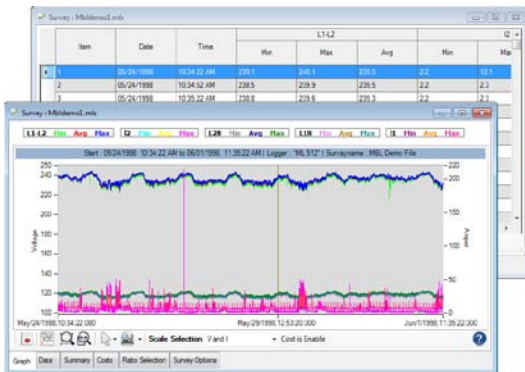
	Specification	Notes
Maximum Channels	Five	3 Voltages and 2 Currents
Ranges	Channel 1 and 2 0-150 VAC Channel 3 0-300 VAC Channel 4 and 5 0-225 Amps	All readings True RMS
External Connections	Opto-isolated RS232C.	Internal RESET and SLEEP switches.
Sensor Type	Voltage-internal impedance network, Current – internal CT's	
Sample Rate	¼ Second.	
Storage Rate	1 second to 1 hour.	Set via Silent Partner Pro software.
Parameters Stored	Average, Min/Max, or Min/Max/Average.	Set via Silent Partner Pro software.
Memory	512K bytes.	Non-volatile flash memory.
Memory Treatment	Stop when full, or wrap.	Set via Silent Partner Pro software.
Storage Capacity	512K	512K Total
Indicators	External: Loose neutral, Low/High Voltage	Internal: Flashing Recording LED, L1 voltage/power LED.
Power	Line powered with internal rechargeable battery for backup.	Uses rechargeable battery. Can be recharged via external power adapter (approximate recharge time 16 hours).
Battery Life	3 days typical with fully charged battery.	Lead-foil battery.
Communications	Optically isolated USB, RS232, support for remote setup.	
Software	Silent Partner Pro power calculation software for Windows.	PC running Windows XP, Windows 7 and Windows 8.
Packaging	Water tight (with meter affixed). Rugged, durable ABS.	All components conformally coated.
Accuracy	Voltage: ±0.3% Full Scale, Current: ±0.3% Full Scale.	
Resolution	0.1V, 0.1A	12-bit A/D converter.
Safety	Optically isolated download, CSA Special Inspection.	
Weight	3.25 lbs.	
Dimensions	6" diameter x 5" deep (6" dia. X 6" for -40° model).	
Environmental	-40°C to 60°C (- 40°F to 140°F) extended temp range, Relative humidity - to 90% non-condensing.	

Silent Partner Pro Software - Simple, Easy, Powerful

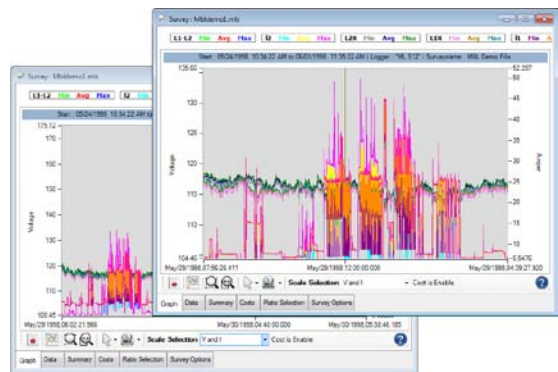
Silent Partner Pro software allows you to download, save, retrieve and analyze data collected by the Silent Partner series products. The software will run on any PC running Windows XP, Windows 7, and Windows 8.

Software Features

- Runs under Microsoft Windows® XP, 7 and 8
- Full colour print support
- Built-in export to CSV, MS Excel, MS Word and HTML
- Allows you to import a bitmap file so you can include your company logo on printed reports

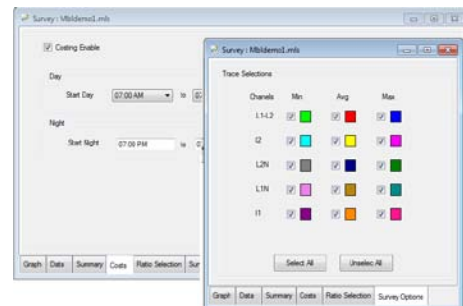
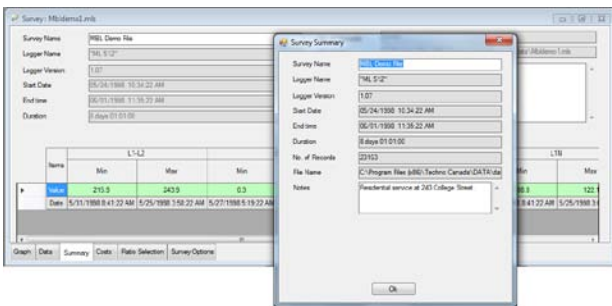


- Flexible View graphs from 1 second and up
- View current and voltage traces on a single graph
- Enable and disable individual traces to remove on-screen clutter
- Graphs can be configured to display a single or dual Y-axis
- Zoom feature allows you to view graphs in maximum detail



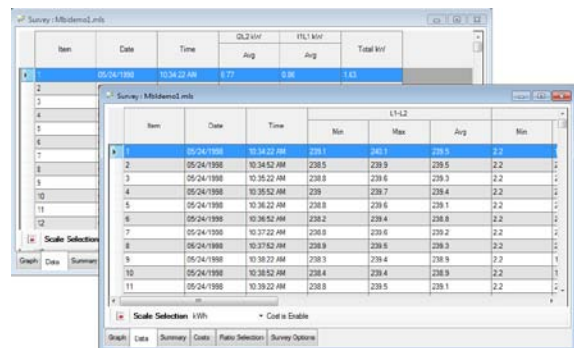
- The Notes box allows you to enter information about the test site, particulars of the hookup, contact names, etc.
- View your data in graphical form or view the actual numerical data in tabular form

- All setup of sampling rate/storage interval, time and channel configuration is done via software
- Calculate Power values such as kW, kVAR, kVA, kWh and kWh cost!



- The Data Box allows you to view details information on the Graph.
- Real Time Monitoring all Voltages and Currents Ch.

- The Survey Summary gives you concise statistics about your data in one compact report, with min/max reports for each data type



Ordering Information

Description	Order Code	Description	Order Code
Silent Partner Meter Base Logger (-40°C to 60°C)	MBL40	Extra Instruction Manual	MA53
MBL Carry Case	M406	Extra MBL Download Cable	DC54

Northwood Power Instruments Inc.
 1235 Journey's End Circle, Unit #1
 Newmark, Ontario L3Y 8T7 CANADA
 Tel.: 905-770-3797 Fax: 905-770-4167 www.northwoodpower.ca

Distributed by: